

ISSUE A
JULY 2016

AG LASER & GPS

PROUD MANUFACTURERS OF THE TOOMEY SCRAPERS



SPARE PARTS FOR TOOMEY SCRAPERS

HYDRAULIC TUBE
BEARINGS & BUSHES
SEALS
CUTTING EDGES
PINS

AG LASER & GPS

Shed 2 168 Loves Road Alberton, QLD. 4207

Phone: 0427 182 796

Contents

| | | |
|-------|--|---|
| 1 | INTRODUCTION | 2 |
| 2 | Spares | 2 |
| 2.1 | Hydraulic Tube | 2 |
| 2.1.1 | Pre-Made lines..... | 2 |
| 2.2 | Bearings..... | 2 |
| 2.2.1 | Spherical Bearings (Maintenance Free)..... | 2 |
| 2.2.2 | Spherical Bearings (Greased Type)..... | 3 |
| 2.2.3 | Fibre Wound Bushes (Maintenance Free)..... | 3 |
| 2.2.4 | Hardened Steel Bushes (Grease Type) | 3 |
| 2.2.5 | Tapered Roller Bearings (Wheel Hubs)..... | 3 |
| 2.3 | Seals & Seal Kits | 4 |
| 2.3.1 | Caged Wiper Seals (For PWM Bushes) | 4 |
| 2.3.2 | Hydraulic Cylinder Seal Kits (Toomey Cylinders)..... | 4 |
| 2.3.3 | Hydraulic Cylinder Seal Kits (Alford Cylinders)..... | 4 |
| 2.4 | Cutting Edges | 5 |
| 2.5 | Cylinder & Pivot Pins | 6 |
| 2.5.1 | Induction Hardened Chrome Pins (Maintenance Free)..... | 6 |
| 2.5.2 | Ripper Linkage Pins..... | 6 |
| 2.5.3 | Swivel Hitch Pins | 6 |
| 2.6 | Order Form..... | 7 |

1 INTRODUCTION

This document lists the spare parts and accessories available for purchase from AG Laser & GPS. The components are grouped into common categories and listed below. An order form can be found at the end of this document to aid in purchasing the required components.

2 Spares

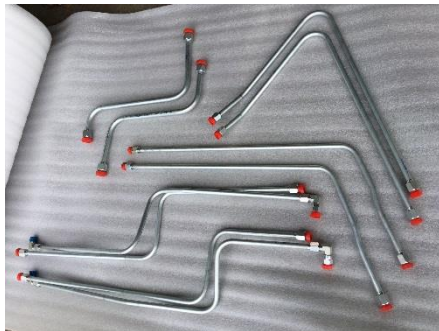
2.1 Hydraulic Tube

Hydraulic tubes can be supplied in raw straight sections or cut, bent and flared to replace existing tubes or custom made to suit any application.

| Size | Finish | Length | Price (AUD exc. GST) |
|---------------|-------------|--------|----------------------|
| 5/8" x 1.63mm | Zinc Plated | 6.0m | \$55.00 |
| 3/4" x 1.63mm | Zinc Plated | 6.0m | \$60.00 |



2.1.1 Pre-Made lines



For custom or replacement lines contact us for pricing.

Services include cutting, bending, flaring, cleaning and capping.

2.2 Bearings

2.2.1 Spherical Bearings (Maintenance Free)

| Description | Part Number | Price (AUD exc. GST) |
|------------------------|--------------|----------------------|
| 50mm Spherical Bearing | GE50-TXE-2LS | \$102.53 |
| 60mm Spherical Bearing | GE60-TXE-2LS | \$153.28 |
| 70mm Spherical Bearing | GE70-TXE-2LS | \$204.53 |
| 80mm Spherical Bearing | GE80-TXE-2LS | \$254.18 |
| 90mm Spherical Bearing | GE90-TXE-2LS | \$310.15 |



2.2.2 Spherical Bearings (Greased Type)



| Description | Part Number | Price (AUD exc. GST) |
|------------------------|-------------|----------------------|
| 50mm Spherical Bearing | GE50-ES-2RS | \$42 |
| 60mm Spherical Bearing | GE60-ES-2RS | \$67 |
| 70mm Spherical Bearing | GE70-ES-2RS | \$95 |
| 80mm Spherical Bearing | GE80-ES-2RS | \$145 |
| 90mm Spherical Bearing | GE90-ES-2RS | \$177 |

2.2.3 Fibre Wound Bushes (SKF Brand Maintenance Free)

| Description | Part Number | Price (AUD exc. GST) |
|---------------------|-------------|----------------------|
| 50 X 58 X 60 BUSH | PWM505860 | \$131.18 |
| 80 X 90 X 80 BUSH | PWM809080 | \$224.40 |
| 90 X 105 X 80 BUSH | PWM9010580 | \$345.68 |
| 100 X 115 X 80 BUSH | PWM10011580 | \$POA |



2.2.4 Hardened Steel Bushes (Grease Type)



| Description | Part Number | Price (AUD exc. GST) |
|----------------------|-------------|----------------------|
| 80 x 95 x 80 BUSH | 7Y3427 | \$65.88 |
| 100 x 116 x 100 BUSH | 7Y2397 | \$96.48 |

2.2.5 Tapered Roller Bearings (Wheel Hubs)

| Description | Part Number | Price (AUD exc. GST) |
|---------------------------|-------------|----------------------|
| 75ID 130 OD Wheel Bearing | 33215 (SKF) | \$130 |
| 85ID 150OD Wheel Bearing | 33217 (SKF) | \$230 |



2.3 Seals & Seal Kits

2.3.1 Caged Wiper Seals (For PWM Bushes)

| Description | Part Number | Price (AUD exc. GST) |
|---------------------------|-------------|----------------------|
| 50 x 60 x 5 WIPER SEAL | 9050078 | \$25.10 |
| 80 x 90 x 5 WIPER SEAL | 9080068 | \$53.60 |
| 90 x 105 x 6 WIPER SEAL | 9090058 | \$67.52 |
| 100 X 115 X 6 WIPER SEAL | 9100078 | \$57.46 |
| 100 X 120 X 10 WIPER SEAL | 9100088 | \$60.46 |



2.3.2 Hydraulic Cylinder Seal Kits (Toomey Cylinders)



| Description | Part Number | Price (AUD exc. GST) |
|-----------------------|-------------|----------------------|
| 4" x 2" SEAL KIT | SK004002 | \$205.72 |
| 4" x 2.25" SEAL KIT | SK004225 | \$211.68 |
| 4.5" x 2.25" SEAL KIT | SK045225 | \$221.94 |
| 5" x 2.25" SEAL KIT | SK005225 | \$220.78 |
| 6" x 2.5" SEAL KIT | SK006025 | \$297.86 |
| 6.5" x 2.5" SEAL KIT | SK065025 | \$341.40 |
| 7" x 2.5" SEAL KIT | SK007025 | \$375.22 |
| 7.5" x 2.5" SEAL KIT | SK075025 | \$453.00 |
| 8" x 3" SEAL KIT | SK008003 | \$491.90 |

2.3.3 Hydraulic Cylinder Seal Kits (Alford Cylinders)

| Description | Part Number | Price (AUD exc. GST) |
|-----------------------|-------------|----------------------|
| 4" x 2" SEAL KIT | SKA004002 | \$TBA |
| 4" x 2.25" SEAL KIT | SKA004225 | \$TBA |
| 4.5" x 2.25" SEAL KIT | SKA045225 | \$TBA |
| 5" x 2.25" SEAL KIT | SKA005225 | \$TBA |
| 6" x 2.5" SEAL KIT | SKA006025 | \$TBA |
| 6.5" x 2.5" SEAL KIT | SKA065025 | \$TBA |
| 7" x 2.5" SEAL KIT | SKA007025 | \$TBA |
| 7.5" x 2.5" SEAL KIT | SKA075025 | \$TBA |
| 8" x 3" SEAL KIT | SKA008003 | \$TBA |



2.4 Cutting Edges

| Description | Part Number | Model Appl. | Price (AUD exc. GST) |
|---------------------------|-------------|-------------------|----------------------|
| Ripper Point | 230SP | ALL | \$10.00 |
| Rubber Pin | 230SP PIN | ALL | \$5.00 |
| STINGER EDGE - 3FT WIDE | CE8377 | ALG3500/4000 | \$462.50 |
| FLAT EDGE - 3FT WIDE | CE8378 | ALG3500/4000 | \$362.50 |
| FLAT EDGE - 4FT WIDE | CE8379 | ALG4450 | \$582.50 |
| FLAT EDGE - 2.7FT WIDE | CE8380 | ALG4450 | \$400.00 |
| STINGER EDGE - 4FT WIDE | CE8381 | ALG4450 | \$752.50 |
| SIDE BOARD - 4.66FT LONG | CE8382 | ALG4500/5000/5100 | \$392.50 |
| SIDE BOARD - 3.31FT LONG | CE8384 | ALG4000/4450 | \$350.50 |
| ROUTER EDGE - 1.64FT LONG | CE8385 | ALG4000/4450 | \$220.67 |
| SIDE BOARD - 2.71FT LONG | CE8387 | ALG3500 | \$325.76 |
| ROUTER EDGE - 1.51FT LONG | CE8388 | ALG3500 | \$210.56 |

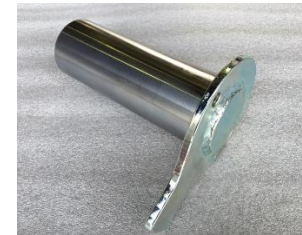
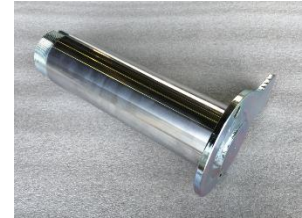


2.5 Cylinder & Pivot Pins

2.5.1 Induction Hardened Chrome Pins (Maintenance Free)

These pins are manufactured from 38MnVS6 induction hardened, chromed and precision ground shaft. They are machined and the flanges are welded on before the chrome surface is wrapped and the whole pin is Zinc plated to resist corrosion.

| Description | Part Number | Price (AUD exc. GST) |
|---------------------------------|-------------|----------------------|
| Ø50 x 87 LG PIN Z/P | A-0039 | \$183.95 |
| Ø50 x 95 LG PIN Z/P | A-0262 | \$185.92 |
| Ø50 x 107 LG PIN Z/P | A-0038 | \$188.88 |
| Ø50 x 112 LG PIN Z/P | A-0148 | \$190.11 |
| Ø50 x 124 LG PIN Z/P | A-0076 | \$193.07 |
| Ø50 x 142 LG PIN Z/P | A-0037 | \$197.51 |
| Ø50 x 170 LG PIN Z/P | A-0166 | \$204.41 |
| Ø50 x 186 LG PIN Z/P | A-0045 | \$208.36 |
| Ø50 x 250 LG PIN Z/P | A-0243 | \$224.14 |
| Ø60 x 90 LG PIN Z/P | A-0048 | \$194.45 |
| Ø60 x 260 LG PIN Z/P | A-0167 | \$254.80 |
| Ø70 x 125 LG PIN Z/P | A-0053 | \$234.38 |
| Ø70 x 305 LG PIN Z/P | A-0072 | \$337.88 |
| Ø80 x 215 LG PIN Z/P | A-0156 | \$435.64 |
| Ø80 x 275 LG PIN Z/P (Threaded) | A-0242 | \$648.49 |
| Ø90 x 175 LG PIN Z/P | A-0157 | \$439.83 |



2.5.2 Ripper Linkage Pins

The ripper linkage pins are manufactured from 4140 bar, machine and zinc plated

| Description | Part Number | Price (AUD exc. GST) |
|----------------------|-------------|----------------------|
| Ø50 x 220 LG PIN Z/P | s-0058 | 179.24 |

2.5.3 Swivel Hitch Pins

The swivel hitch pins are manufactured from 38MnVS6 induction hardened chrome bar, cut to length with the ends rounded off.

| Description | Part Number | Price (AUD exc. GST) |
|--------------------|-------------|----------------------|
| Ø40.0 x 300 LG PIN | s-0071 | 123.97 |
| Ø50.8 x 392 LG PIN | s-0073 | 146.65 |

